

Connecting the Pieces of the Puzzle with Relentless Hope



Anchoring secure attachment through a relational and whole system approach to the care of young people with complex needs.

Jennie Welham – Regional Director

Cariad Warrilow – Regional Data & Performance Manager

&

Gareth Jenkins - Director of Children's Services, Caerphilly County Borough Council

A Gwent Partnership Board Service ~ Gwasanaeth Bwrdd Partneriaeth Gwent



**Our approach
and way of
being –
Values led**

**Our clinical model
– Normative,
Developmental
and
Relational**

**Our Service
Model – Front
of house
delivery and
back of house
support**

**Our
Impact
– Making the
difference**



A Gwent Partnership Board Service ~ Gwasanaeth Bwrdd Partneriaeth Gwent



Our approach & way of being - Values led



Being flexible,
accessible,
co- regulating in live
experiences

Security / continuity
of long term
relationships

Humanising children,
families, professionals
& ourselves

Noticing dynamics
(drama triangle)

Noticing defences-
esp. splitting

Containing &
processing
emotion

Self reflection
& awareness

Attending to our culture
with strong connection
to values

Valuing team &
differences of view

Safety to make mistakes
& continually learn

A Gwent Partnership Board Service ~ Gwasanaeth Bwrdd Partneriaeth Gwent

Bronfenbrenner's
ecological model
of child
development

Pearce & Cronen's
Coordinated
management of
meaning

Rogers
Humanistic
Psychology

Our clinical
model
-Normative
Developmental
and
Relational

Attachement
approaches,
Dan Hughes,
Theraplay,

Linehan's
DBT

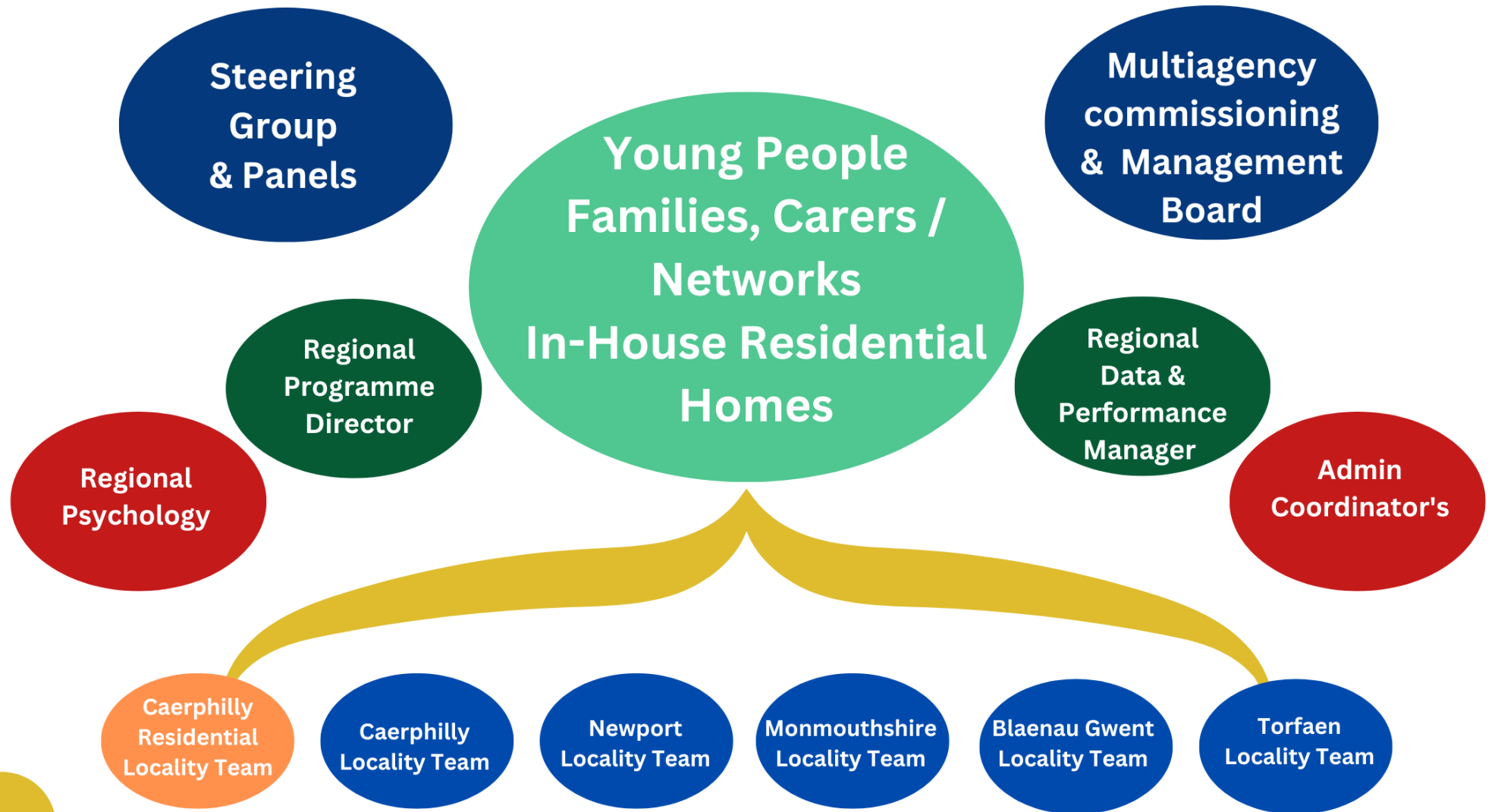
Systemic - Systems, relationships,
patterns & narratives

A normative, developmental,
relational, contextual approach

Trauma
informed
approaches

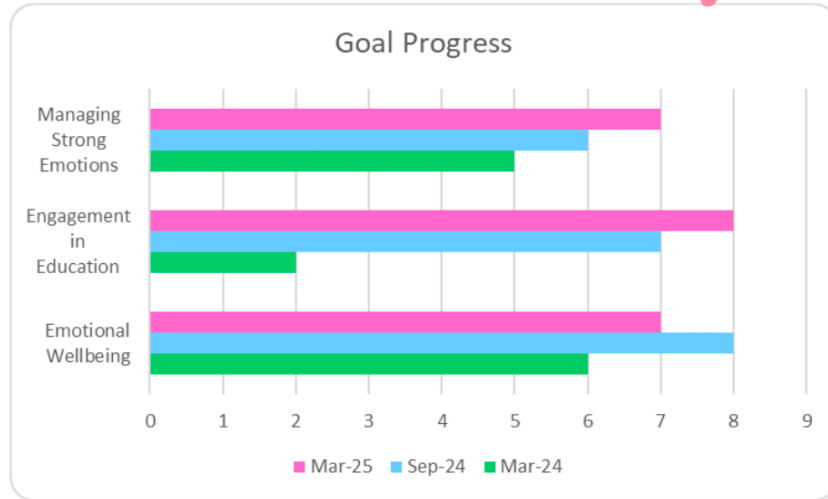
A Gwent Partnership Board Service ~ Gwasanaeth Bwrdd Partneriaeth Gwent

Our Service Model - Front of house delivery & back of house support



A Gwent Partnership Board Service ~ Gwasanaeth Bwrdd Partneriaeth Gwent

My MyST Journey



15

20 Months

Before/Then

Sad
Dark, black
broken
heart



After/Now

Feelings

More Secure
Blue heart is her
feeling happier
"Chilling"

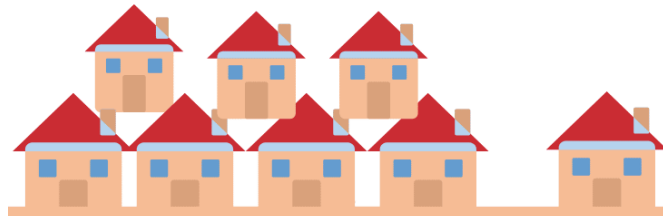


Thoughts

Depressed
Life was
a mess
"WTF"

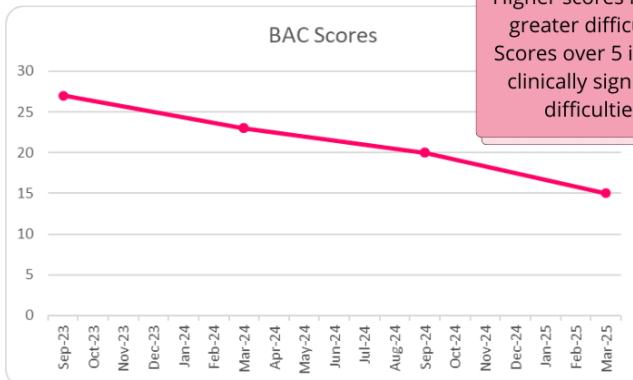


Thinking positively
Taking part in a
catering course
Enjoys Food



7 Foster Placements
Prior to MyST

Moved home to
Mums care with
24 hour
2-1 nursing staff



BAC Scores
Higher scores indicate
greater difficulties.
Scores over 5 indicate
clinically significant
difficulties.

Verbal & Physical
aggression
Damage to property
Substance misuse
Self- Harm
Mispers
Daily police
involvement



Behaviours

No police involvement
Normative teenage
behaviour
Still takes
substances

Chill
Time

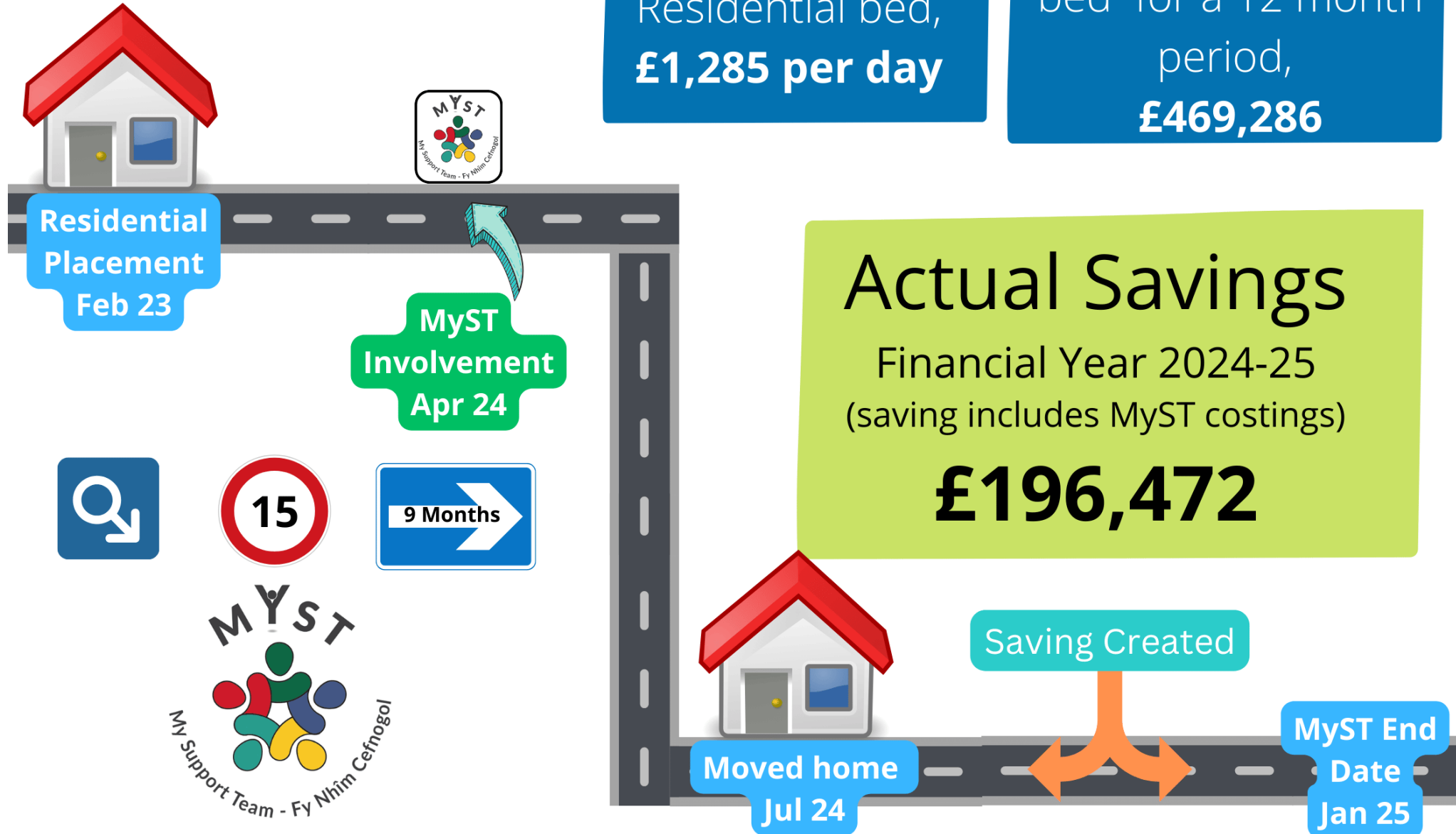
Moved to
Borough
Oct 22



MyST Aug 23
Prevention of
Residential care

Mar 25

My MyST Journey



Contact details

- **Jennie Welham** - Regional Programme Director
- WELHAJ@CAERPHILLY.GOV.UK
- **Cariad Warrilow** - Regional Data & Performance Manager
- WARRIC@CAERPHILLY.GOV.UK



Victoria Village Primary School
Lower Harpers Road
Abersychan
Pontypool
Torfaen
NP4 8PW
01495 764680

Ty Pawb
5-6 High Street
Bargoed
Caerphilly
CF81 8QZ
01443 811485

A Gwent Partnership Board Service ~ Gwasanaeth Bwrdd Partneriaeth Gwent

