

West Midlands CAMHS Provider Collaborative

Back To Their Futures Summit– 1st April 2025

Learning session 6:

Learning from Provider Collaboratives: A multi-agency response to improve life outcomes for children and young people living in residential care in the West Midlands

Elaine Kirwan – Clinical/Programme Director of West Midlands CAMHS Provider Collaborative

Michelle Cresswell – Associate Director of Commissioning & Transformation

Natasha Moody – Assistant Director of Wellbeing and Partnerships, Staffordshire County Council

Overview

Introductions

How we work together as a partnership

Our Children and Young People

How our approach is improving care for children with complex needs

Learning to date

The West Midlands Strategic Commissioning Network

We are a strategic group from across the West Midlands Region who have an interest and role in leading commissioning

Developing a robust market for Children's Services so that internal and external opportunities to meet the needs of children are available across the region

Monitor and analyse the activity delivered by the Regional Commissioning Hub to provide quality assurance

Develop, implement and contribute to a clear work plan for the Regional Strategic Commissioning Network and the Regional Commissioning Hub

Deliver and monitoring the implementation of the plan and identifying key risks which require escalation.



The beginnings of our Partnership with Toucan ...



- Strategic Commissioning Network were developing an application for the Regional Care Collaborative opportunity
- Reached out to WM CAMHS Provider Collaborative during this process
- Our organisational challenges were different but we held a shared view of the problem - CYP were falling through the cracks and we held a shared vision to improve the overall outcomes for children and young people defined as complex
- Maintained momentum post application as there was a desire to:
 - Affect change leading to better outcomes for our most vulnerable children and young people
 - Align our commissioning intentions
 - Improve support to ensure therapeutic homes to deliver high quality care for children and young people.

Toucan - The West Midlands CAMHS Provider Collaborative



Our young people named us Toucan. We are a partnership that consists of a group of 10 NHS and Independent Partners who work together to provide CAMHS inpatient and highly specialised community mental health, learning disability and autism services for young people aged 13-18.


Our shared ambition is to;

- **Ensure providers consistently meet the highest levels of quality standards including patient safety and experience**
- **Transform services across the West Midlands by utilising investments to develop new care models and integrated clinical pathways**
- **Work with our partners to agree our priority areas (where working at scale makes sense clinically and financially)**
- **Tackle health inequalities experienced by our communities.**
- **Co-produce services with our children and young people to ensure services are tailored and meets the needs of its users.**




Strategic Drivers for Change


Classification: Official



DRAFT Commissioner Guidance for Children and young people Mental Health, Learning Disability and Autism Inpatient Services



Publication reference:





Children subject to deprivation of liberty orders

Key findings from 12 months of research at the national deprivation of liberty court



Young people | September 2023

Briefing

 **CHILDREN'S COMMISSIONER**

Children with complex needs who are deprived of liberty

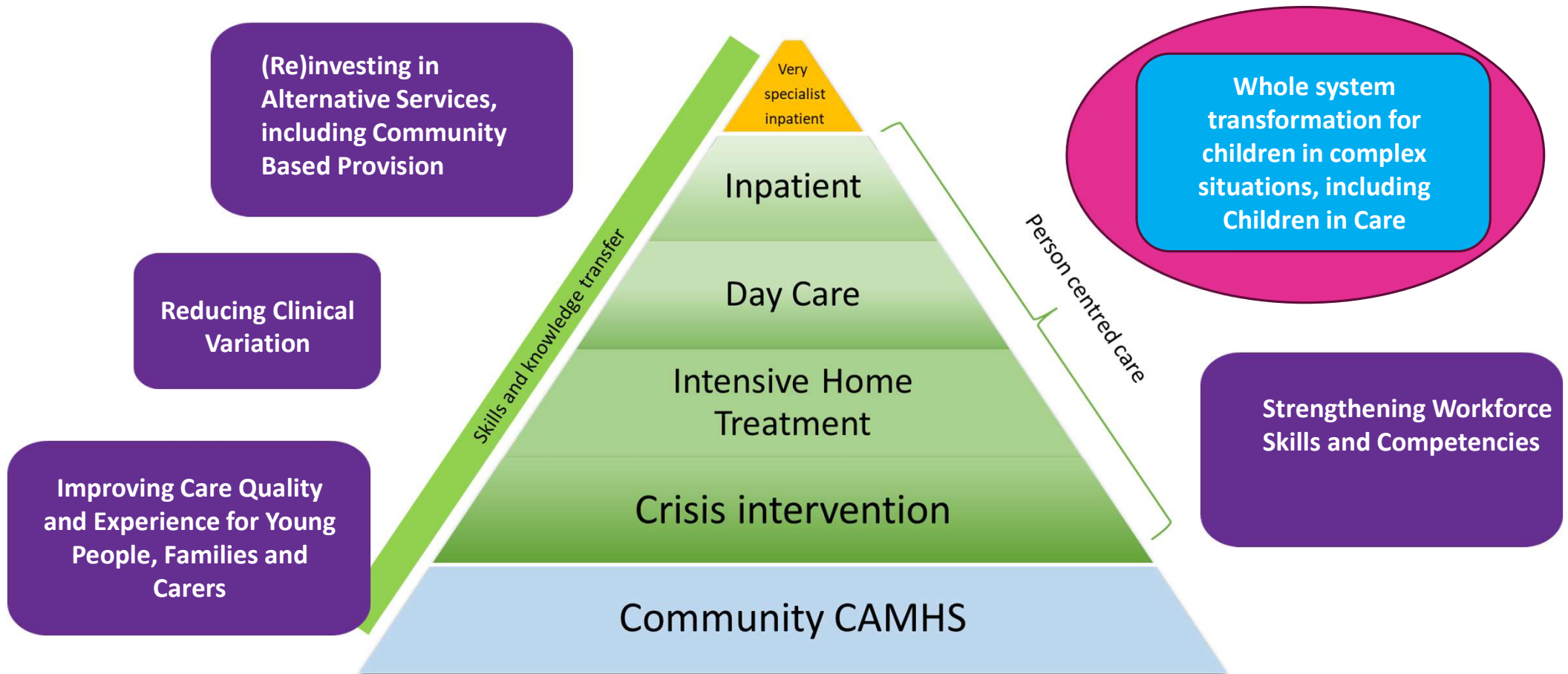
Interviews with children to understand their experiences of being deprived of their liberty

November 2024

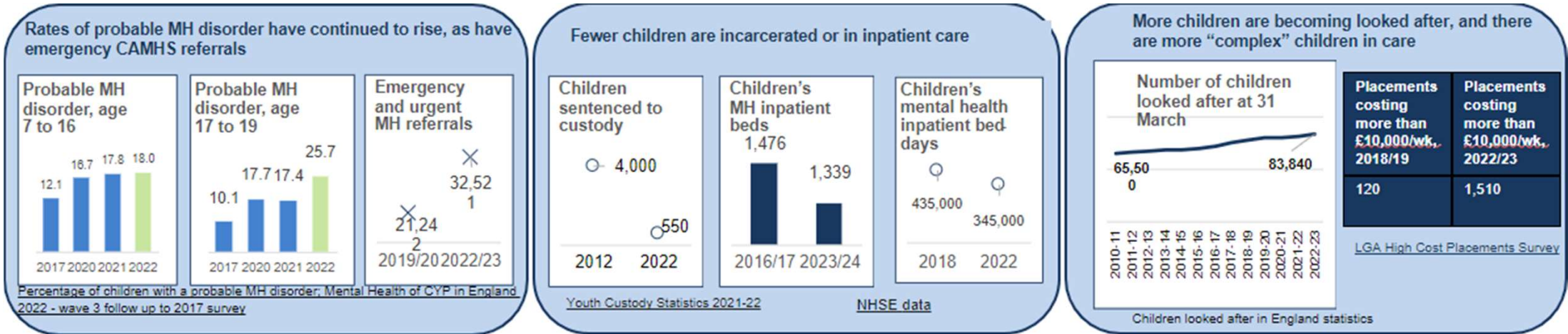


CYP Intensive Mental Health Services Transformation

Strategic Priorities for WMCPD Specialised Commissioning 25/26



Case for Change – Data Intelligence/National Drivers



Nationally, the DfE and NHSE are jointly leading work to improve the lives of children with challenging behaviour and complex mental health needs who are at risk of being, or have been, deprived of their liberty.

Longer term aim of reduce the reliance of Deprivation of Liberty Orders, bringing it back to a last resort option.

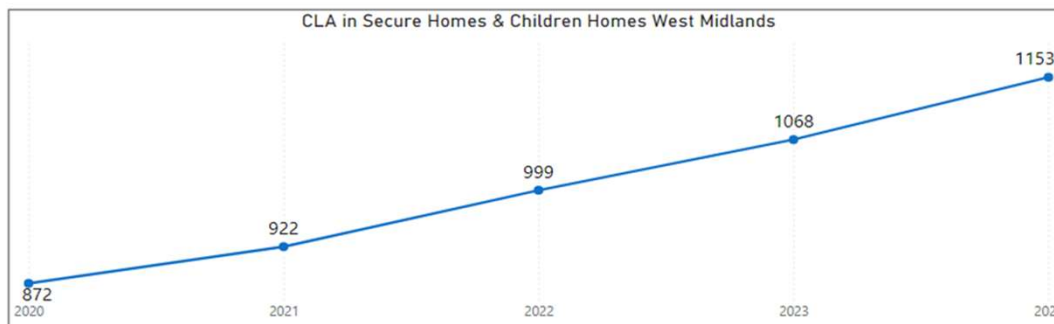
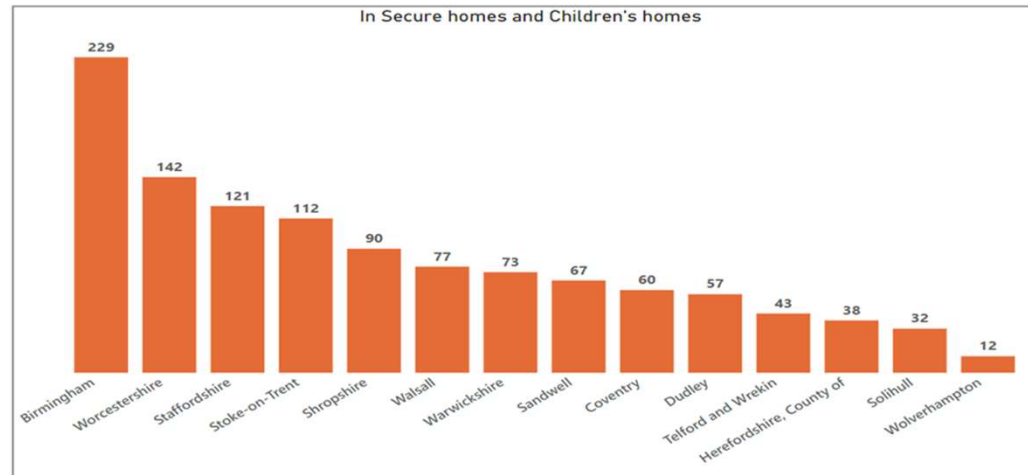
Ensure children with complex needs are living in **safe and appropriate accommodation with the right level of safeguard and support** around them.

Data Intelligence (Local)

In West Midlands as at
31/3/24

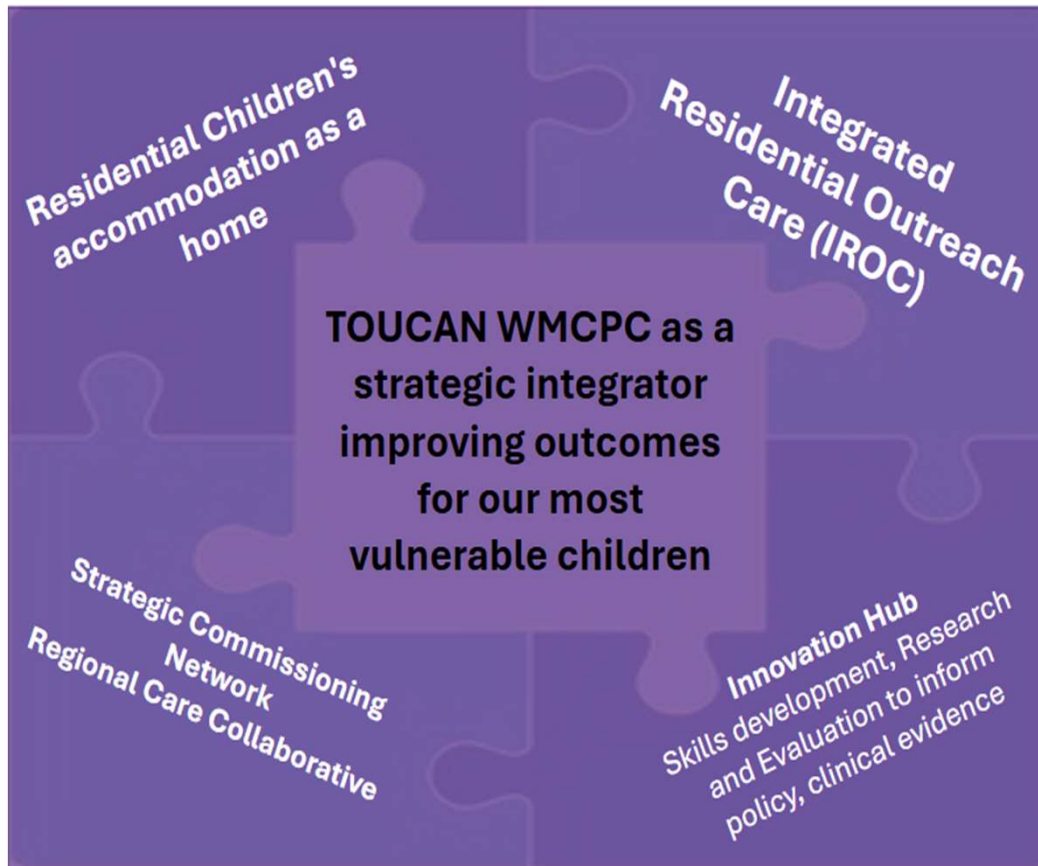
1153

Children were looked after (CLA)
in Secure homes & Children's
homes



Upward trend in the no. of CLA placed in
secure homes and children's homes in the
West Midlands over the past five years.

Working Together for Transformational Change



- Children and Young People are at the heart of all that we do – active co-production activity
- Establishing an overarching steering group (strategic system development)
- Conducting preliminary scoping work to identify CiC specific services and residential placement processes
- Identifying areas of unmet need, to guide investment plans.

Toucan WMCPIC Integrated Residential Outreach Care – The IROC Vision



“Through an integrated multi-disciplinary and strategic approach, IROC will influence system change and enable the right support is in place for children and young people with complex psychological and significant mental health needs, who live in children's residential provision and are subject to a Deprivation of Liberty (DoL) Order”



Toucan values the voice of children and young people and respects lived experience.

We will use that knowledge, expertise and research to create future care models that meet their needs.

The WMCPC Integrated Residential Outreach Care IROC Mission



The Toucan Integrated Residential Outreach Care (IROC) is the only specialist West Midland Mental Health resource specifically commissioned to support the complex needs of children and young people living in residential care under a Deprivation of Liberty Order.

IROC fulfils its mission by:

- Working in collaboration with our social care strategic network partners and the residential networks
- Working alongside children and young people throughout the process of assessment and support.
- Accompanying the social worker and the chosen residential care home provider throughout the process of placement and beyond.
- Supporting the system and network by training, supervision, and resourcing specialist assessments.



The IROC Implementation



- IROC provides an integrated multi-disciplinary approach for children and young people with severe/complex mental health needs who live in children's residential provision and are subject to a Deprivation of Liberty Order [DoL].
- IROC strengthens the broader and existing care system by implementing and integrating components of specialist clinical case management, psychological and psychiatric support.
- IROC integrate and coordinate care with our residential care providers increasing provider knowledge and capacity to deliver improved therapeutic care, reducing risk and increasing protective factors.
- IROC is an enhanced clinical Multi – disciplinary resource

IROC Service Model

IROC will provide evidence-based assessment, care and support to CYP aged 13-17 inc. who are placed in residential care and are subject to a deprivation of liberty order. IROC will be in-reach responsive, offering a range of care options from lower to more intensive support when needed. IROC will do this through an intensive and integrated care framework that is both developmentally appropriate and trauma sensitive and responsive.

IROC will strengthen the therapeutic support to CYP in the chosen placement ensuring providers have opportunities for training, building the capacity of Specialist Therapeutic Residential providers to deliver service specifications and strengthen the focus of the Strategic Clinical Network, ensuring there is robust clinical support as part of the commissioning focus on residential care for CYP.

The IROC service model will be based on data and feedback from stakeholders and CYP. This review/evaluation approach will ensure that IROC is effective and continues to grow and evolve based on system learning and guidance from our CYP and experts with lived experience.

IROC will strengthen multiagency working and system integration through clinical case formulation and care planning. Implementing a holistic and system assessment of needs will lead to an increased co-ordination of care planning and clinical formulation within residential therapeutic children's home provision, across the West Midlands, with the offer of training, reflective practice and workforce skill development.

IROC will provide enhanced support to the CYP's current 'Care System' building capacity and knowledge across the entire support system. Clinical specialists will offer co-ordinated support that is tailored to the needs of the CYP and their "care system". IROC will strengthen the residential therapeutic children's home provision with the offer of training, reflective practice and workforce skill development.

IROC will be welcoming, youth friendly and promote a sense of autonomy in care. IROC will prioritise relationships as the vehicle for change via safety, acceptance and non-stigmatising care. IROC supports and values lived experience as expertise and will look in future to include Peer Support as an essential component of the continuum of IROC care.

Clinical Leadership

Business and Administration support

Clinical Case Management

Psychology & Psychology Assistant

CAMHS Psychiatry

Clinical Nurse Specialists

Occupational Therapy

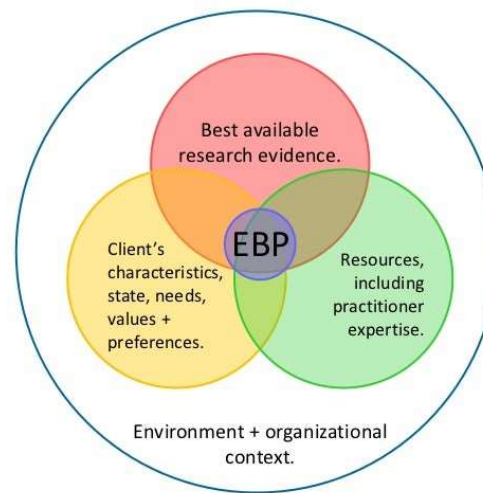
Speech and Language Therapy

Social Worker





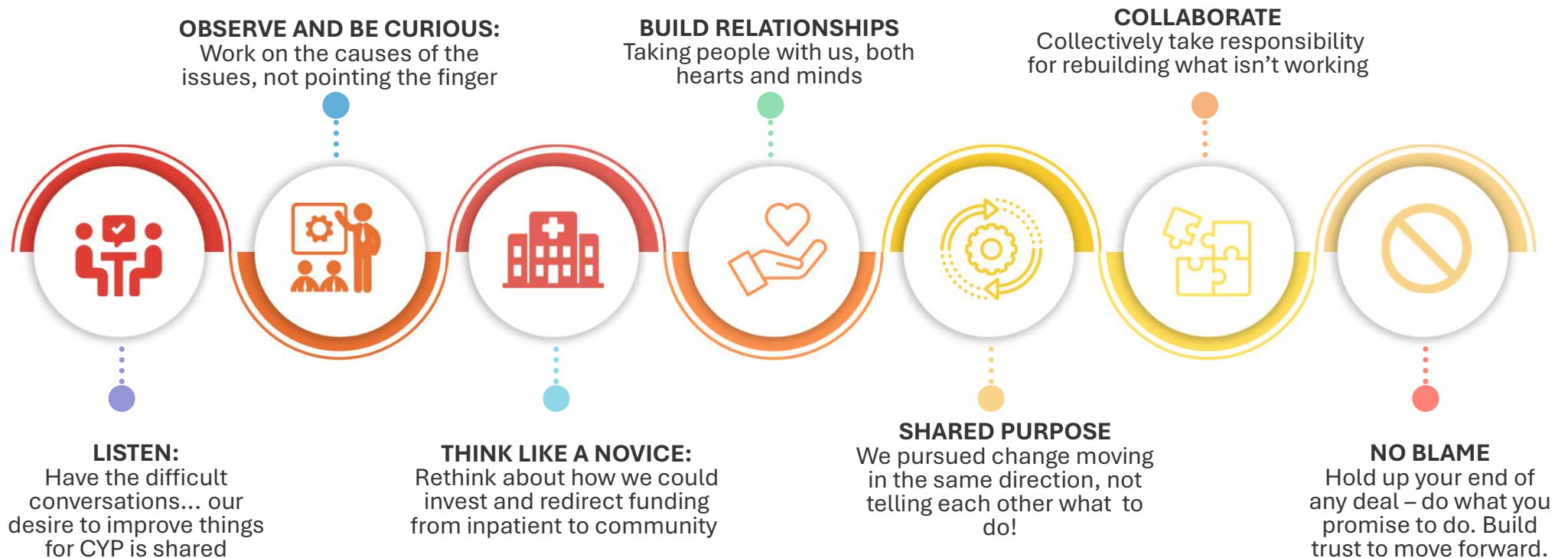
EBP




What does it take to launch IROC?

- The right people and attitude around the table
- An evidence-base model of integrated care
- Funding – demonstrating return on investment

Our learning to date...





Not everything that is faced can
be changed, but nothing can be
changed until it is faced.

James Baldwin

“ quote fancy

Discussion Session

**Innovation Hub
IROC Model
Strategic Partnerships**